

RoHS, Halogen, Antimony Compatible EDX-GP/LE Check Sample

Enables Antimony Screening in Addition to RoHS/ELV and Halogen Screening

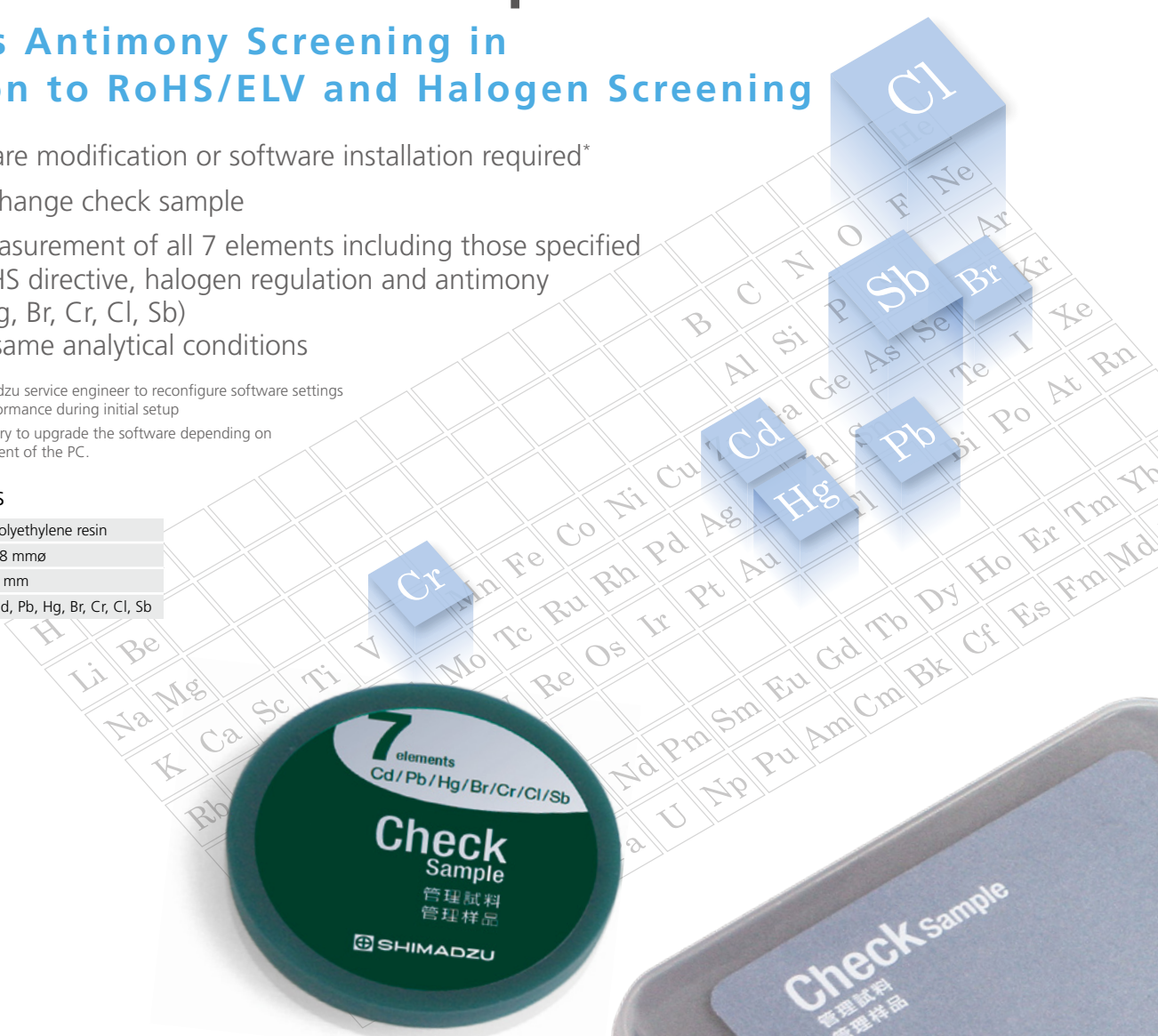
- No hardware modification or software installation required*
- Simply exchange check sample
- Allows measurement of all 7 elements including those specified by the RoHS directive, halogen regulation and antimony (Cd, Pb, Hg, Br, Cr, Cl, Sb) using the same analytical conditions

* Requires a Shimadzu service engineer to reconfigure software settings and confirm performance during initial setup

* It may be necessary to upgrade the software depending on the use environment of the PC.

Specifications

Material	Polyethylene resin
Size	48 mmø
Thickness	5 mm
Elements Added	Cd, Pb, Hg, Br, Cr, Cl, Sb

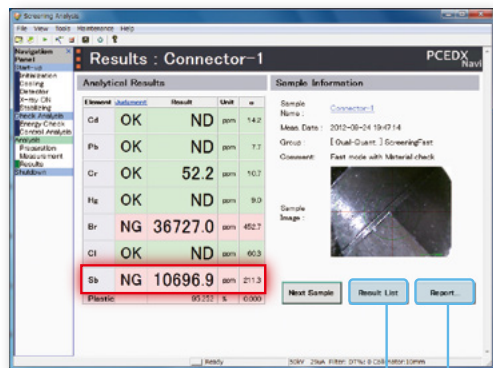


Antimony Screening Can Be Conducted Simultaneously

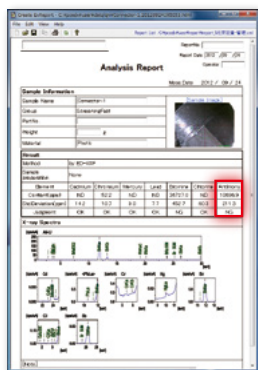
The same analytical conditions can be used to measure all 7 elements specified by the RoHS directive, halogen regulation and antimony (Cd, Pb, Hg, Br, Cr, Cl, Sb).

[Results] Window

Displays screening results for all 7 elements specified by the RoHS directive, halogen regulation and antimony at the same time.



Example of Report Created for 7 Elements

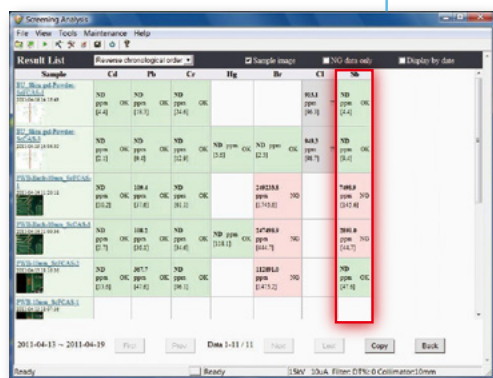


Resin Coating Material

[Result List] Window

Displays a summary list of screening results for all 7 elements specified by the RoHS directive, halogen regulation and antimony.

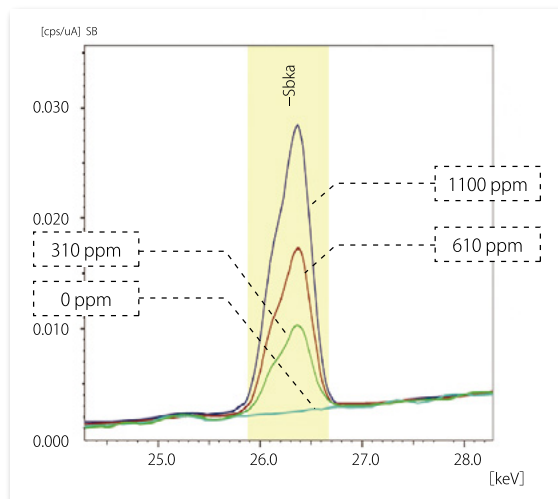
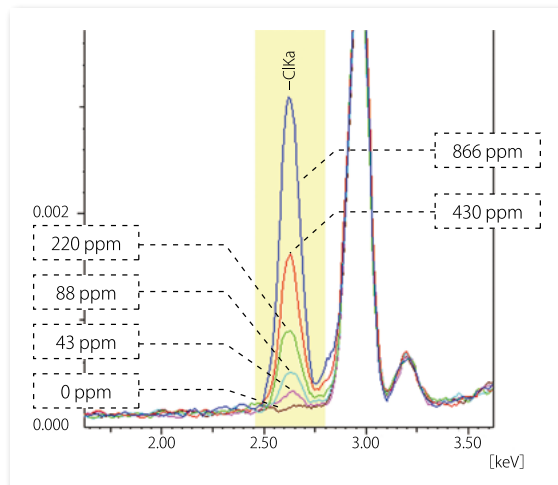
In addition, reports can be created individually and results can be pasted to Excel or other software applications.



Cl and Sb Measurement Using the EDX-GP/LE

Compare Cl and Sb Spectra at Various Concentrations in Resin

The EDX-GP/LE can measure samples under regular air conditions, for Cl and Sb screening as well as RoHS screening. Peaks for atmospheric Ar and Cl are clearly separated.



Shimadzu Corporation
www.shimadzu.com/an/

For Research Use Only. Not for use in diagnostic procedures.

This publication may contain references to products that are not available in your country. Please contact us to check the availability of these products in your country.

Company names, products/service names and logos used in this publication are trademarks and trade names of Shimadzu Corporation, its subsidiaries or its affiliates, whether or not they are used with trademark symbol "TM" or "®".

Third-party trademarks and trade names may be used in this publication to refer to either the entities or their products/services, whether or not they are used with trademark symbol "TM" or "®".

Shimadzu disclaims any proprietary interest in trademarks and trade names other than its own.

The contents of this publication are provided to you "as is" without warranty of any kind, and are subject to change without notice. Shimadzu does not assume any responsibility or liability for any damage, whether direct or indirect, relating to the use of this publication.