

For LabSolutions™ LCMS

LC/MS/MS Method Package for Veterinary Drugs Ver. 2

- Method package including 129 veterinary drug compounds, more than 3 times as many as Ver. 1
- High-speed method with just 16.5 mins detection time
- Pretreatment program to improve the peak shape for polar veterinary drug compounds
- Data analysis is made simple with LabSolutions Insight™

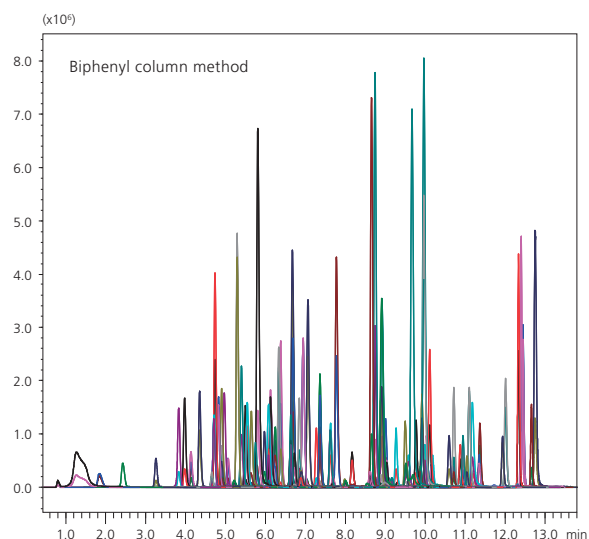
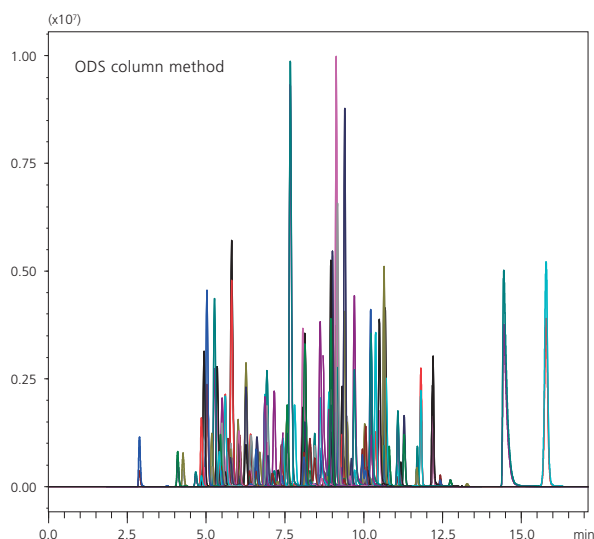


LCMS-8060

Simultaneous analysis of 129 veterinary drug compounds in just 16.5 minutes

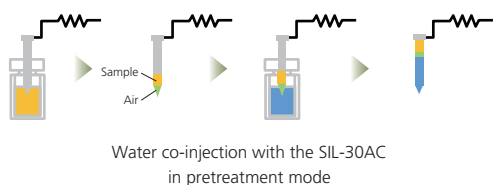
The rapid increase in world population in recent years has led to concerns about providing stable and safe food resources in a timely manner. Veterinary drugs are indispensable tools for sustainable food supply through their role in disease prevention and treatment in livestock and fish farming. However, due to the possibility of these drugs being ingested in turn by humans, it is of great importance that their safety be investigated thoroughly.

This method package provides a high-speed method for the detection of 129 veterinary drug compounds in just 16.5 minutes. The number of compounds has been greatly increased from Ver. 1. Methods are provided for both ODS and biphenyl columns, so the appropriate method can be selected according to column type.



LC/MS/MS Method Package for Veterinary Drugs Ver. 2

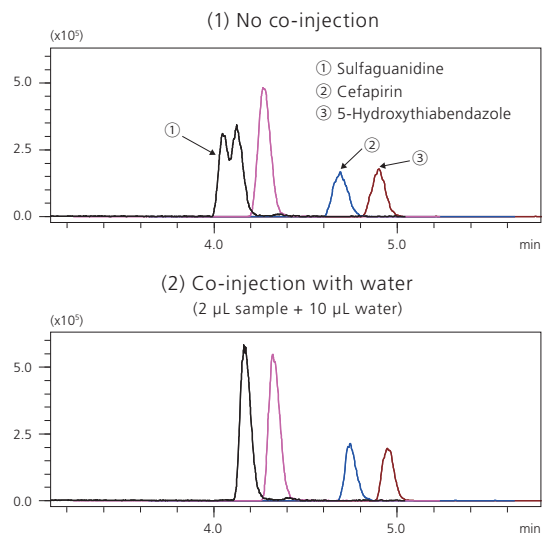
Improve peak shape for polar compounds with co-injection



Samples prepared using pretreatment methods such as QuEChERS are extracted with a high organic solvent ratio. Depending on the analysis conditions, the peak shape of polar compounds with a short retention time may become irregular as in graph (1).

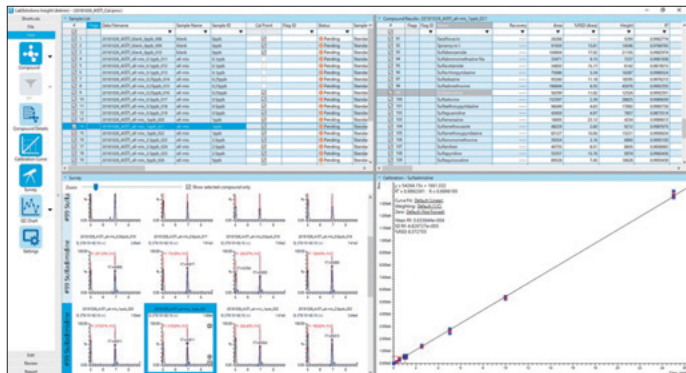
Because a pretreatment program for co-injection is incorporated into the simultaneous analysis method, it is easy to carry out co-injection with water to improve peak shape, as shown in graph (2).

Note: Please use the SIL-30AC autosampler in co-injection mode.



MRM chromatograms for veterinary drugs showing improved peak shapes from co-injection (sample injection vol. 2 μL)

Smooth analysis of multiple samples with LabSolutions Insight



LabSolutions Insight software can handle all data analysis for multiple compounds and samples. Data analysis is fully incorporated into this method package, which provides smooth and continuous data processing from measurement through to report creation.

LabSolutions Insight includes quantitative analysis and screening functions. In the analysis window, data is displayed for each target compound and data set. You can easily select whether to show quantitative values and/or area values according to your workflow.

Results exceeding specified values can be flagged, allowing for easier checking of compliance with regulations over a large number of samples and improving throughput.

Cautions

LabSolutions LCMS Ver.5.93 or later is required.

LabSolutions Insight Ver.3.3 or later is required.

LabSolutions, LCMS and LabSolutions Insight are trademarks of Shimadzu Corporation.



For Research Use Only. Not for use in diagnostic procedures.

This publication may contain references to products that are not available in your country. Please contact us to check the availability of these products in your country.

Company names, products/service names and logos used in this publication are trademarks and trade names of Shimadzu Corporation, its subsidiaries or its affiliates, whether or not they are used with trademark symbol "TM" or "®".

Third-party trademarks and trade names may be used in this publication to refer to either the entities or their products/services, whether or not they are used with trademark symbol "TM" or "®".

Shimadzu disclaims any proprietary interest in trademarks and trade names other than its own.

The contents of this publication are provided to you "as is" without warranty of any kind, and are subject to change without notice. Shimadzu does not assume any responsibility or liability for any damage, whether direct or indirect, relating to the use of this publication.

Shimadzu Corporation

www.shimadzu.com/an/