

Press Release

A-GB-10014

November 8, 2010

LC/MS/MS analyses Supersonic Flow

The fastest Triple Quadrupole Mass Spectrometer / Unparalleled detection speed for UHPLC systems / Efficient tool to increase lab efficiency

Shimadzu, one of the worldwide leading manufacturers in analytical instrumentation, has introduced the LCMS-8030 which combines the power of triple quadrupole mass spectrometry with unmatched speed to provide the ideal complement to its UHPLC systems. It is an efficient tool to increase lab efficiency, supporting researchers who are constantly challenged to detect more target analytes with greater sensitivity in hundreds of samples per day. The LCMS-8030 accelerates workflows for high-throughput analysis. It is suitable for various industries such as pharmaceutical, environmental, chemical and food.

The LCMS-8030 features ultra-fast multiple reaction monitoring (MRM) transitions, enabling data acquisition with up to 500 different channels per second. The improvements to the electronics provide ultra-fast mass spectrum measurement speeds of 15,000 u/sec without sacrificing sensitivity or resolution, with ultra-fast polarity switching (15 msec) for maximum information without signal deterioration.

Highly reliable results

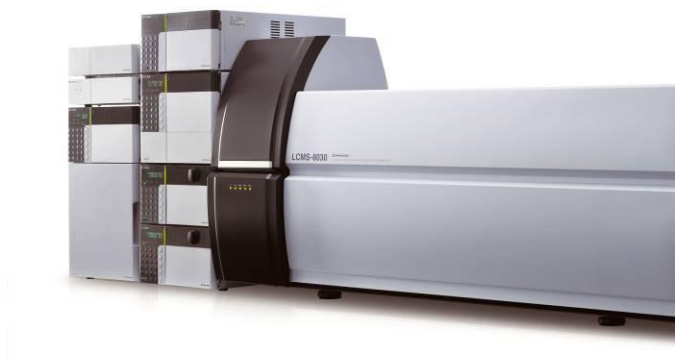
Patented UFsweeper technology accelerates ions out of the collision cell by forming a pseudo-potential surface. The result is high-efficiency collision-induced dissociation (CID) and ultra-fast ion transport, reducing sensitivity losses and cross talk observed on other systems. In addition, higher radio frequency (RF) power capability minimizes pauses between each transition.

When coupled with Shimadzu's Nexera UHPLC, the LCMS-8030 can provide reliable and accurate detection of peaks just one-second wide, thereby maximizing UHPLC performance. With a polarity switching time of just 15 ms, ultra-fast triple quadrupole measurement time is now a reality.

Seamless LC/MS/MS analyses

The combination of the LCMS-8030 with the class-leading Nexera UHPLC brings the latest hardware together on one platform. This unified platform provides unmatched qualitative and quantitative analysis, increased productivity and accelerated workflows for high-throughput analysis. Automated optimization of analytical conditions for each quantitative target compound, which is the key to high-sensitivity analysis, allows unattended, overnight operation. In addition, all software operations are handled seamlessly, reducing PC conflicts and the need for user intervention.

With the LCMS-8030, maintenance has never been easier or more accessible. Its robust design allows maximum uptime, resulting in a system that can handle most complex matrices. Maintenance of the desolvation line without breaking vacuum minimizes instrument downtime.

**Image 1:**

Supersonic - LCMS-8030's triple quadrupole technology enables ultra-fast mass spectrometry and facilitates seamless LC/MS/MS analyses in a high-performance, high-speed flow.

For further editorial questions, please contact:
Uta Steeger, Shimadzu Europa GmbH, Albert-Hahn-Str. 6-10, 47269 Duisburg
Tel.: +49 (0) 203-7687-410, email: us@shimadzu.eu

Additional information is available on Shimadzu's website: www.shimadzu.eu

Download is possible via <http://shimadzu.eu/press>

Follow us on twitter: <http://twitter.com/ShimadzuEurope>